



Home Visiting in Michigan

MICHIGAN HOME VISITING INITIATIVE

The Michigan Home Visiting Initiative (MHVI) is a collaborative effort between the Michigan Department of Health and Human Services, the Michigan Department of Education, the Children's Trust Fund, and the Medical Services Administration (Medicaid). The Initiative is supported through the work of many passionate state and local partners with the primary goal of building a quality home visiting system with families and for families. Home visiting services are available in all 83 counties in Michigan.

The Michigan Home Visiting Initiative includes 8 unique models. The Maternal Infant and Early Childhood Home Visiting (MIECHV) program funds, in part: Early Head Start-Home Based, Healthy Families America, and Nurse-Family Partnership.

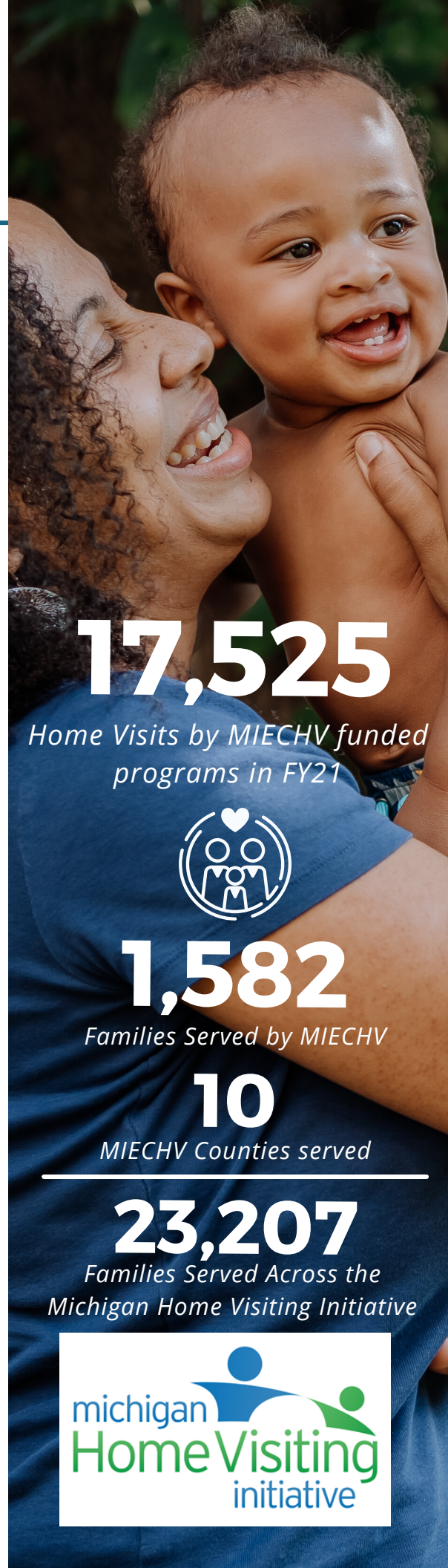
INVESTMENT

Michigan is invested in serving families through evidence-based home visiting. Home visiting programs receive funding from state, federal, and local dollars. MIECHV dollars, \$7,528,259 in FY21, represent approximately 19% of Michigan's total investment in evidence-based home visiting. MIECHV dollars are a necessary part of Michigan's home visiting system, supporting direct services for families as well as infrastructure efforts for a sustainable and quality home visiting system.

HEALTH EQUITY IN MICHIGAN

Michigan is committed to improving health equity and reducing the disparities that families experience. MIECHV efforts to better engage in health equity include:

- ★ Data disaggregation and development of Health Equity Spotlights to highlight disparate findings for LIAs.
- ★ Participation in the Home Visiting Health Equity COLIN to support both state and local leaders to understand existing health inequities and employ strategies to decrease disparities.
- ★ MI MIECHV efforts are aligned with Michigan's [Mother Infant Health & Equity Improvement Plan](#) to improve health and well-being for both mom and baby as well as eliminate disparities



17,525

Home Visits by MIECHV funded programs in FY21



1,582

Families Served by MIECHV

10

MIECHV Counties served

23,207

Families Served Across the Michigan Home Visiting Initiative



SUBSTANCE MISUSE SUPPORT

In 2021, Michigan Home Visiting received state funding allocated specifically to better support families who have infants born prenatally exposed to substances. This innovative project not only is expanding the number of home visiting slots for families who are impacted by substance misuse, but is also placing Peer Navigators within the healthcare system to support families and ensure they are connecting to needed community services, highlighting home visiting as a key support strategy. The identified communities have undergone a community-led decision-making process in which community partners identified the home visiting model(s) that would best fit the needs of families with substance misuse impact in their community.

PARENT LEADERSHIP

Home visiting can be a powerful strategy for supporting families in accessing services. However, home visiting programs exist in systems that systematically disadvantage the families served by these programs. Michigan has prioritized parent leadership to ensure that we have voices represented of those most impacted by these systemic inequities that exist in communities.

★ Michigan partnered with the Early Childhood Investment Corporation to develop "**Stepping Up and Speaking Out**" which provided guidance about the unspoken ingredients needed to build an impactful parent leadership system.

★ Michigan has developed a Parent Coordinator Position to help to better support Parent Leadership across the Home Visiting System



WHAT PARENT'S ARE SAYING

"Before becoming a mom, I thought I knew it all about kids. Then I was a mom and had a premie and he is hard of hearing and this is a whole new world. I felt completely unprepared, scared, and felt like I had never even held a child before...The reassurance of home visiting and the information that they provided was great."

Parent, Kent County

"I think it helps to strengthen our families. Whether a broken family, someone who has been through drugs, or any kind of issues, it's nice to have people to help you rather than doing it alone."

Parent, Houghton County



88.2%

Of Infants are born full-term

55.3%

Of Infants are breastfed at 6 months

81%

Of caregivers are screened for depression

79%

Of caregivers read, tell stories, or sign to their children every day

91.5%

Of caregivers report having continuity of insurance coverage



For more information contact Tiffany Kostelec, MIECHV Lead, at KostelecT@Michigan.gov