



# HOME VISITING IN MASSACHUSETTS

## Home Visiting Models

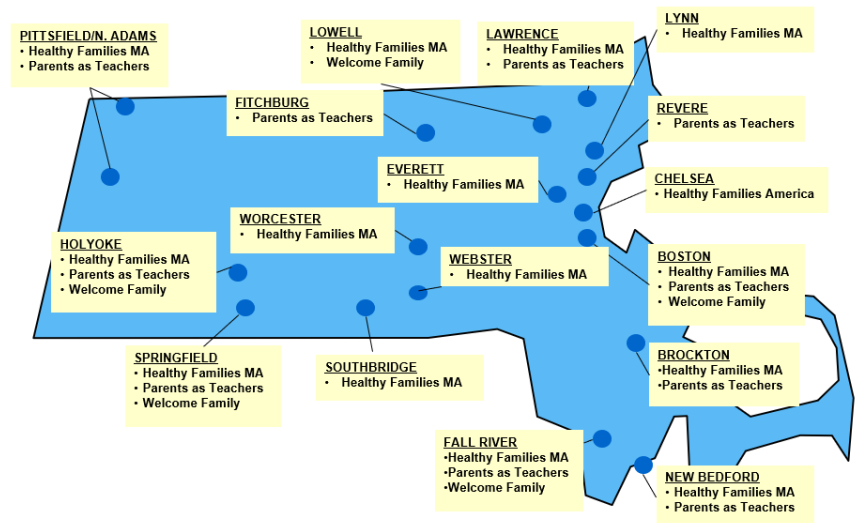
Massachusetts has a wide range of home visiting models across the state including evidence-based and evidence-informed home visiting programs. Models funded by MIECHV include:

**Healthy Families America (HFA)** is a program for pregnant or parenting families with children up to age 5. This program focuses on reducing child maltreatment, improving parent-child interactions and promoting school readiness.

**Healthy Families Massachusetts (HFM)** is a program for first time pregnant/parenting families 23 and younger with infants up to age 1. This program is administered by the Children's Trust and focuses on reducing unintended pregnancies, increasing educational attainment, life skills, and more.

**Parents as Teachers (PAT)** is a program for parents with children through kindergarten. The program is intended to increase parent knowledge of early childhood development and improve parent practices; provide early detection of developmental delays and health issues; and prevent child abuse and neglect.

**Welcome Family** is a MA MIECHV systems building initiative that offers a universal, one-time nurse home visit to all caregivers with newborns up to eight weeks postpartum in five MA MIECHV communities.



Map of 18 MA MIECHV communities and the 24 evidence-based home visiting programs and 5 Welcome Family programs.

## Overview

The Massachusetts Department of Public Health manages the Maternal, Infant, and Early Childhood Home Visiting (MIECHV) program in Massachusetts. MA MIECHV provides voluntary in-home family support services for families with young children in 18 communities using three evidence-based home visiting models that differ in intensity, eligibility, and focus populations.

## Mission

Through home visits by a trained professional, MA MIECHV aims to improve the lives of children and families by supporting parenting, improving maternal and child health, and promoting child development and school readiness. Using a racial equity approach, MA MIECHV facilitates referrals and connections to community services and resources; conducts evaluation; and supports policy and systems development.

## Vision

Home visiting offers support to families with young children in Massachusetts to live in healthy, safe, and nurturing environments.

## Investment

During fiscal year 2021: The MIECHV program provided **\$6.8 million** to support home visiting services; the state provided **\$16.4 million** to Healthy Families Massachusetts, which includes MIECHV and non-MIECHV supported sites; and other home visiting programs.

In Fiscal Year 2021,

1,837

Households served

87%

of MA MIECHV families served had public insurance coverage

35%

of MA MIECHV families served had less than a high school diploma

8%

of MA MIECHV families served experienced homelessness

## A Welcome Family Story

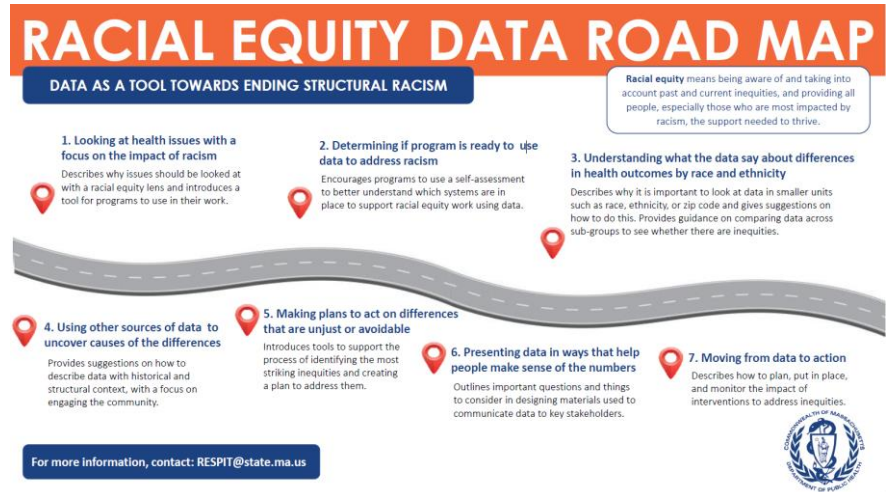
"The fact that this service was offered was a true godsend. [The nurse] made everything effortless for me: she called to follow up, schedule the appointment, showed up on time (and insisted I don't stress about cleaning beforehand), and provided essential services for me and for my newborn. Her lactation counsel solved a difficult latch issue we'd been experiencing and having someone to talk to was such a relief.

I felt cared for in a way that I wouldn't have made time for had this service not been offered and presented at my doorstep. THANK YOU SO MUCH for taking care of moms and babies in this loving way. This visit was an unexpected yet much needed gift of medicine, therapy, and self-care."

## MIECHV Highlights

### Racial Equity and Continuous Quality Improvement

MA MIECHV staff contributed to the development of the [Racial Equity Data Road Map](#), a document of guiding questions, tools, and resources to assist programs in taking concrete steps to better identify, understand, and act to address racial inequities. This Road Map was piloted and tested with the Welcome Family program.



## Parent Leadership

MA MIECHV is committed to advancing family engagement efforts at the awardee and LIA levels by implementing key principles and strategies outlined in the [Strengthening Partnerships: A Framework for Prenatal through Young Adulthood Family Engagement in Massachusetts](#). In November 2021, MA MIECHV facilitated a Grantees Meeting to provide a space for information sharing on family engagement best practices and successful interventions among MA MIECHV programs.

## Want to learn more?

### Christine Silva

MA MIECHV Program Director

Division of Pregnancy, Infancy, and Early Childhood

Massachusetts Department of Public Health

250 Washington St. 5<sup>th</sup> Floor

Boston, MA 02108

Email: [Christine.silva@mass.gov](mailto:Christine.silva@mass.gov)

Website: [Massachusetts Home Visiting Initiative \(MHVI\) | Mass.gov](#)